



# LABOR CASE STUDIES



## PRODUCT OVERVIEW

Building with Premier SIPS can help reduce heating and cooling energy use up to 60% compared to other construction methods. This is due to having far fewer gaps to seal than other structural systems, continuous insulation and reduced thermal bridging.

Premier SIPS panels are comprised of a rigid insulating foam core sandwiched between two OSB panels. Building professionals can use Premier SIPS in place of wood or steel framing, concrete masonry units (CMUs), tilt-up concrete walls and other structural systems for buildings up to five stories tall.

## LABOR CASE STUDY 1

**Project:** Labor time estimate for setting Premier SIPS wall panels used to build the structural and insulated envelope of a 3978 square foot duplex.

**Premier SIPS:** Panels were supplied from factory: Cut to length and width. Spline and plate pockets were factory cut.

### Scope of work - Walls:

1. 312 lineal feet of 8 ft. high walls - installing 2X plate material in factory cut openings and header openings, top plate.
2. Bottom sill plate over conventional floor system.
3. Premier SIPS was set over sill plate.
4. Panel to panel connection was done using surface spline.
5. Corner connection was done.
6. Door, window openings field plated.
7. 4 man crew was used to hand set panels and execute details with assistance of crane

## Results - Walls

- 4 men spent 9 hours 45 minutes or 39 man hours to set 312 lineal feet of wall.
- 8 lineal feet of installed Premier SIP per man hour.
- 64 square feet of installed Premier SIPS per man hour.



## LABOR CASE STUDY 2

**Project:** Labor time estimate for installing Premier SIPS wall panels used to build the structural and insulated envelope of a 3652 square foot single story home.

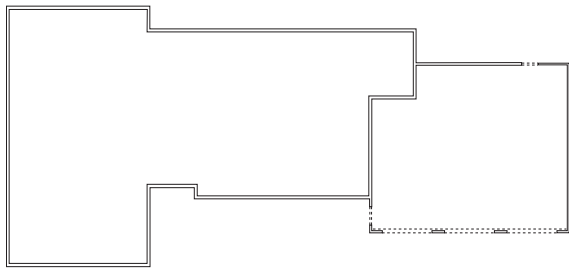
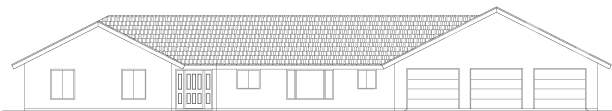
**Premier SIPS:** Panels were supplied from factory: Cut to length, width, and gable configuration. Door and window openings were cut. Spline and plate pockets were factory cut.

### Scope of work - Walls:

1. 348 lineal feet of 8 ft. high walls - installing 2X plate material in 14 factory cut openings and 9 header openings, top plate.
2. Treated plywood with bottom sill plate.
3. Premier SIPS was set over sill plate.
4. Panel to panel connection was done using surface spline.
5. Corner connection was done.
6. Door, window openings field plated.
7. 4 man crew was used to hand set panels and execute details.

### Results - Walls

- 4 men spent 12 hours or 48 man hours to set 348 lineal feet of wall.
- 7.3 lineal feet of installed Premier SIPS per man hour.
- 65 square feet of installed Premier SIPS per man hour.



## LABOR CASE STUDY 3

**Project:** Labor time estimate for the setting of Premier SIPS for wall and roof panels used to build the structural and insulated envelope of a 28' x 22' structure.

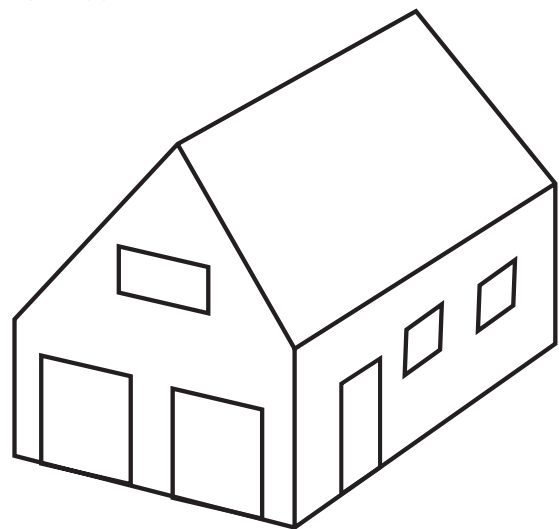
**Premier SIPS:** Panels were supplied from factory: Cut to length, width, and gable configuration. Door and window openings were cut. Spline and plate pockets were factory cut.

### Scope of work - Walls:

1. Treated lumber at top of concrete for capillary break.
2. Sill plate was installed top of treated plate.
3. R-Control SIP was set over sill plate.
4. Panel to panel connection was done using block spline.
5. Corner connection was done.
6. Door, window openings field plated.
7. 4 man crew was used to hand set panels and execute details.

### Results - Walls

- 4 men spent 3 hours or 12 man hours to set 100 lineal feet of wall.
- 8.33 lineal feet of installed Premier SIPS per man hour.
- 84 square feet of installed Premier SIPS per man hour.



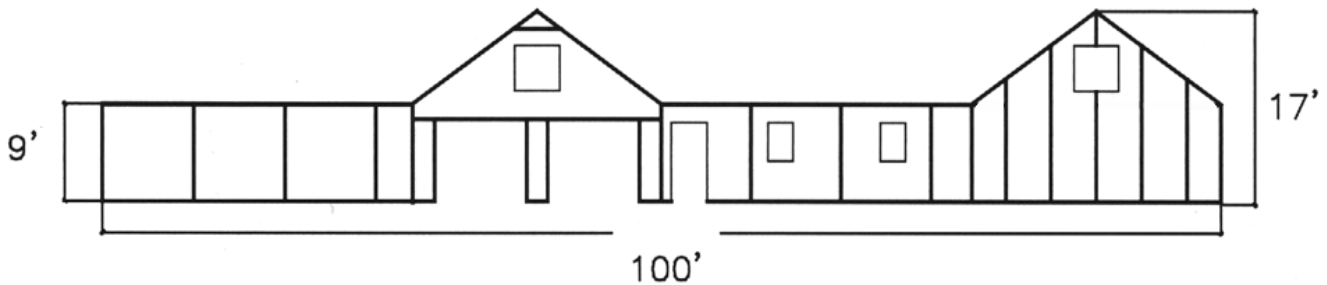
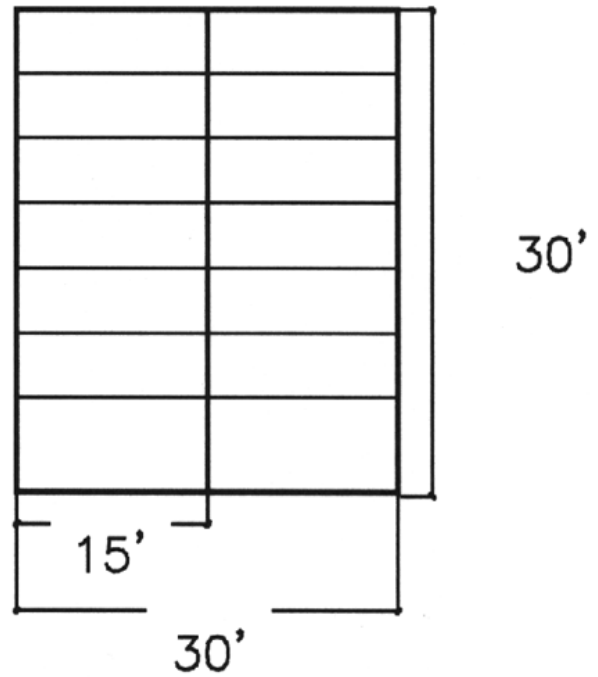
## LABOR CASE STUDY 3 CONT...

### Scope of work - Roof:

1. Preparation of R-Control SIP roof panels on ground, block spline male side installed.
2. Attachment at eave wall.
3. Attachment at gable wall.
4. Attachment at ridge.
5. Eave and gable edge plating.

### Results - Roof:

- Preparation: 2 men spent 1 hour to install 180 lineal ft. of block spline in 4' wide x 15' long roof panels.
- 90 lineal feet of spline per man hour.
- 2 men on roof, 1 man on the ground, set 900 sq. ft. of roof in 2 hours, 6 man hours, plus 2 man hours prep.
- 2 hours of crane time.
- 113 square feet of installed Premier roof panels per man hour.



## READY TO STEP UP YOUR STRUCTURES? START HERE.

Contact your nearest Premier SIPS representative. We will be happy to collaborate with you to determine how to best incorporate Premier SIPS as part of your complete material package. For additional information on Premier SIPS and to contact your nearest representative visit [www.premiersips.com](http://www.premiersips.com).

Distributed in Canada By:



[westecopanel.com](http://westecopanel.com)

