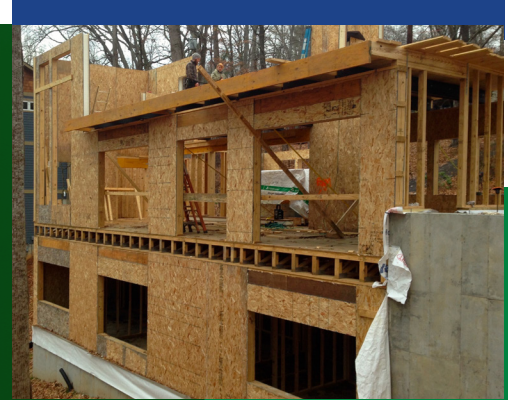




CODE COMPLIANT SIPs SHEARWALL



PRODUCT OVERVIEW

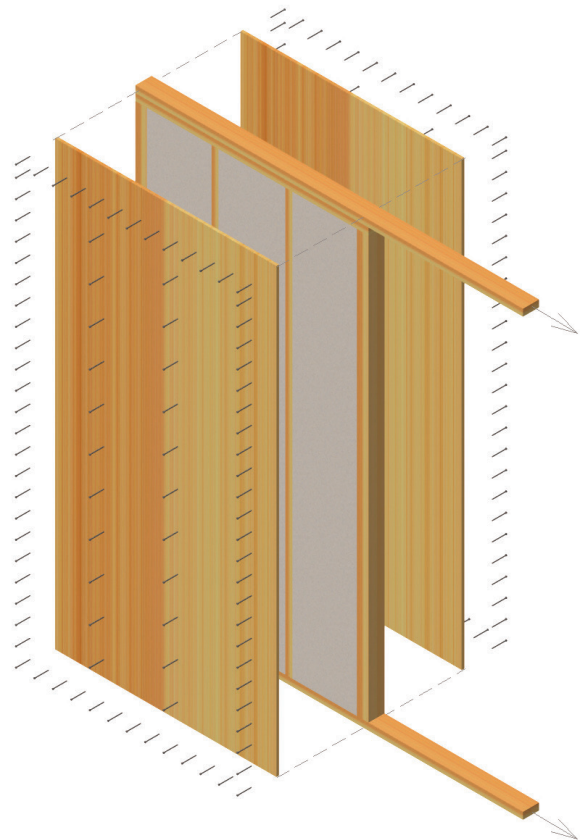
Premier's Code Compliant SIPs Shear Wall are intended to provide engineering information for the design of SIP walls as lateral load resisting systems for all regions of the United States.

There has been significant testing over the years by SIP manufacturers and third party agencies to assess the performance of SIPs for the loads imposed during a seismic event. Results of these tests have consistently confirmed SIPs perform very well during seismic testing. There are also examples where SIP homes outperformed stick-framed homes, built in the same area, during an earthquake.

For use in Seismic zones D, E, & F, Premier's Code Compliant SIPs Shear Wall will enable contractors and designers to take advantage of the many design, construction and environmental benefits of SIPs while complying with building codes in various regions throughout the Western United States.

Key advantages:

- Airtight design offers extreme energy efficiency and exceptional indoor air quality
- Premier SIPs install in days rather than weeks
- Premier SIPs qualify for a high number of LEED & other environmental certification pointsment.



PREMIER SIPS SHEARWALL CAPACITIES

NOMINAL NAIL DIAMETER (INCHES)	MINIMUM NOMINAL FASTENER LENGTH (INCHES)	ALLOWABLE WALL SHEAR VALUES (PLF)							
		SINGLE SIDED 7/16" OSB				DOUBLE SIDED 7/16" OSB			
		FASTENER SPACING AT EDGES OF OSB				FASTENER SPACING AT EDGES OF OSB			
		6	4	3	2	6	4	3	2
0.131 smooth or deformed	2 OR 2 1/2	240	350	450	585	480	700	900	1170
0.148 smooth	3	240	350	450	585	480	700	900	1170
0.120 smooth	3	200	350	400	510	400	600	800	1020
0.113 smooth or deformed	2 OR 2 3/8	180	270	360	460	360	540	720	920
0.099 smooth or deformed	2 1/4	145	215	285	365	290	430	570	730
0.092 smooth	2 1/4	125	190	255	325	250	380	510	650

See Table 18 in ESR-1539 for design information and footnotes. This table is to be used as a guide only. Space fasteners maximum 6 inches on center along intermediate framing members.

READY TO STEP UP YOUR STRUCTURES? START HERE.

Contact your nearest Premier SIPS representative. We will be happy to collaborate with you to determine how to best incorporate Premier SIPS as part of your complete material package. For additional information on Premier SIPS and to contact your nearest representative visit www.premiersips.com.

Distributed in Canada By:



westecopanel.com

