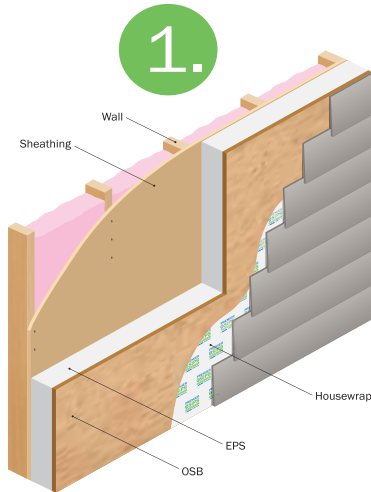


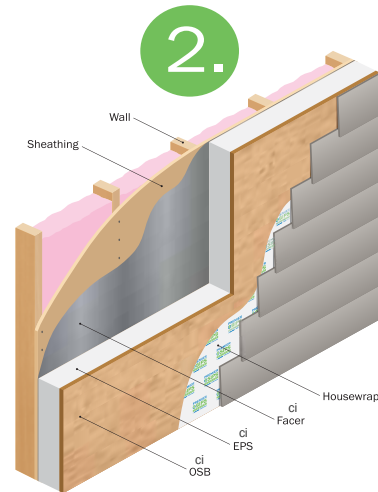
# How Are You Planning on Meeting The Energy Code Requirement for Continuous Insulation? 3 Options For You to Consider....

## Continuous Insulation (ci)



### Stick Framing with Hand Installed ci (7 Steps)

- 1.) Stick Framed Wall
- 2.) Exterior Wall Sheathing
- 3.) Insulate Wall Cavity
- 4.) Continuous Insulation
- 5.) Sheathing or Furring for Siding Attachment
- 6.) Weather Resistive Barrier
- 7.) Siding



### Stick Framing with Premier ci Panel (6 Steps)

- 1.) Stick Framed Wall
- 2.) Exterior Wall Sheathing
- 3.) Insulate Wall Cavity
- 4.) Premier ci Panel = Continuous Insulation & Sheathing or Furring for Siding Attachment
- 5.) Weather Resistive Barrier
- 6.) Siding

3.



### Premier SIPS (3 Steps)

- 1.) SIP = Exterior Wall Sheathing, Continuous Cavity Insulation, Sheathing for Siding Attachment
- 2.) Weather Resistive Barrier
- 3.) Siding

The choice seems simple. For more information contact:

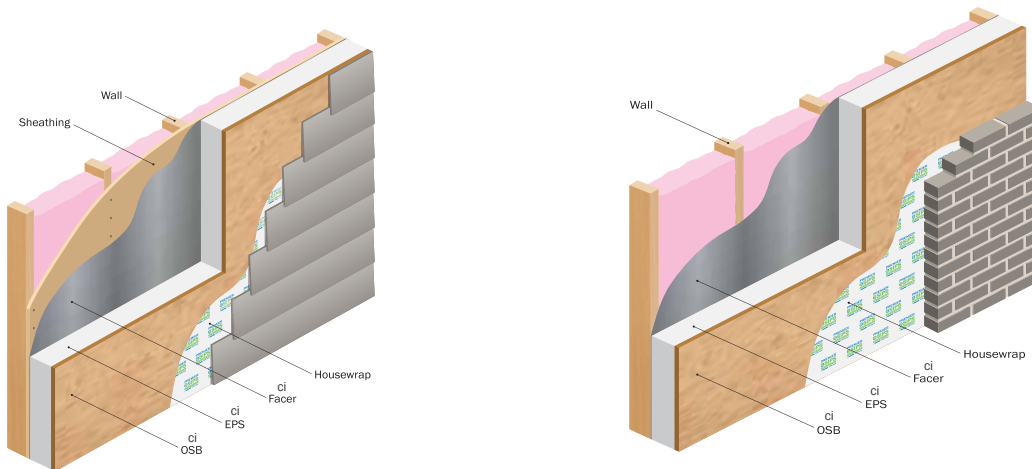
# Premier ci Panel Continuous Insulation

## Reduce Costs. Increase Comfort.

Insulating a building's envelope with Premier's ci Panel is one of the most economical ways to combine continuous insulation (ci) and nail base sheathing. Decrease a building's energy use and increase indoor comfort with one easy to install exterior panel product.

## The Basics of Premier's ci Panel

- Install over stick framing in Type V construction
- Ideal for new construction and retrofit applications
- Meets building codes & energy standards for all-in-one solution for continuous insulation (rigid foam EPS adhered to a metalized polymeric facer), and nail base (OSB or Plywood) for cladding attachment



## Premier's ci Panel Features & Benefits

- Economical insulation and structural nail base in one product
- Solid continuous insulation reduces thermal bridging to add required energy efficiency to projects
- Meets IECC energy standards: R-Value of 7.8\* for 2" panel
- EPS insulation R-Values remains stable for life
- OSB or Plywood laminated to the foam installs faster to save labor in the field, while providing a suitable substrate for cladding attachment
- Added structural shear capacity (ultimate value based on AC-130 testing)
- No additional tools required: ci panel installs with a standard nail gun (using min. 3" nails)
- Hang siding and house-wrap/weather barriers directly on standard 4' x 8' panels
- Multiple substrates available (plywood, gypsum, T-111, etc.)
- Qualifies for Energy Star, LEED, environmental certification programs and tax incentives

\*R-Value based on ASTM C1363 comparative tests